



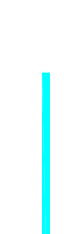


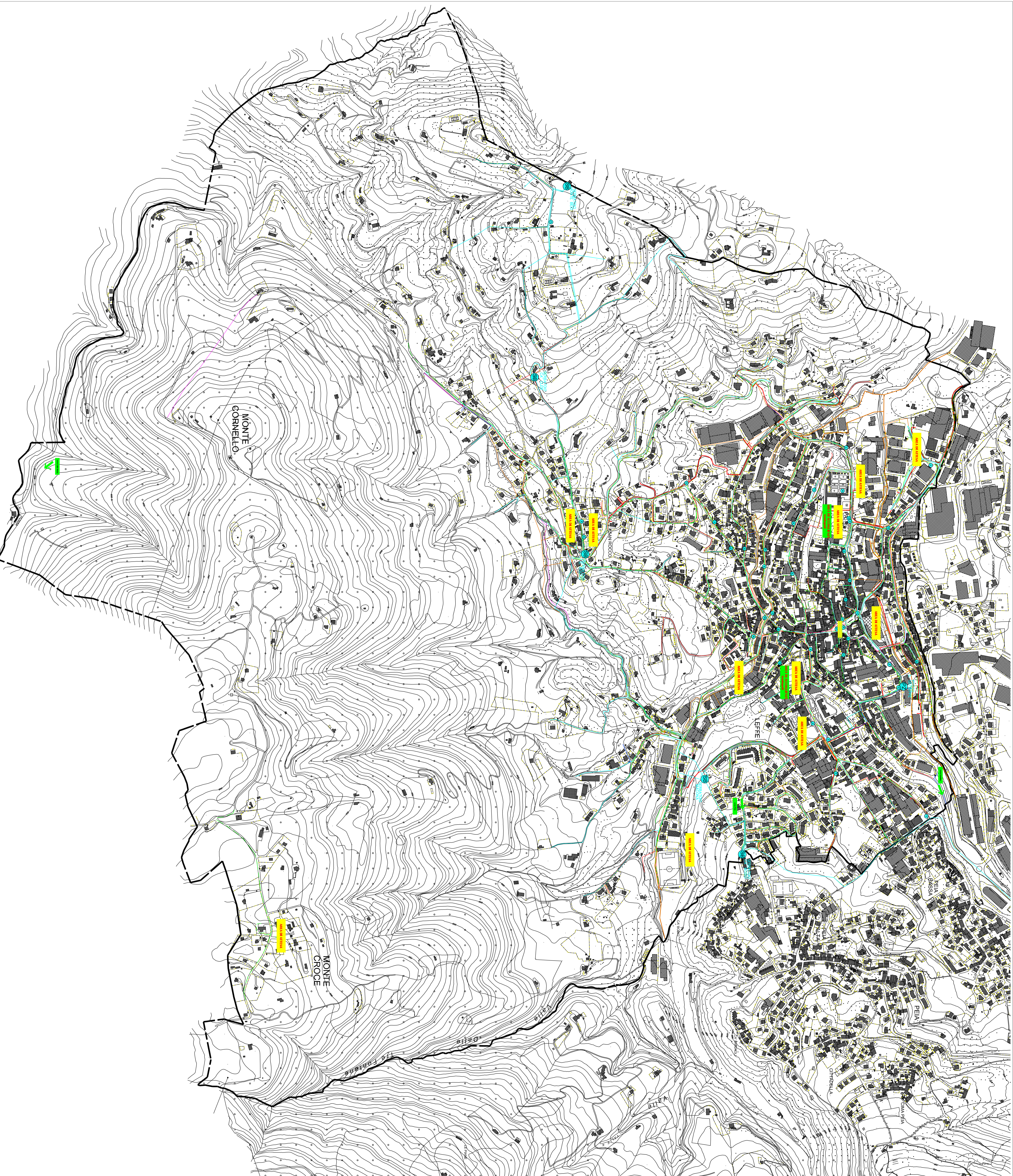


LEGENDA

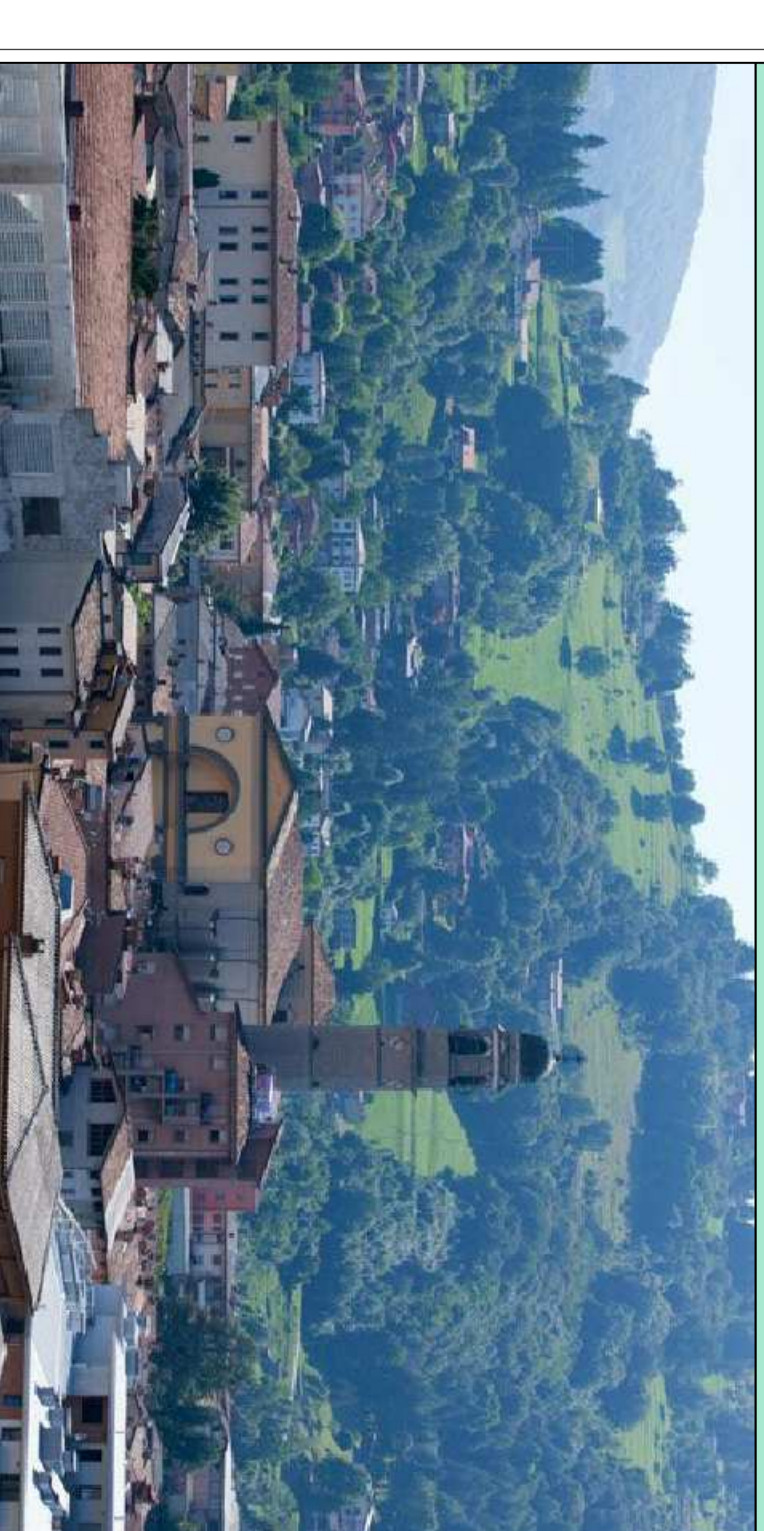
-  Lifelines
-  Gas metano media pressione
-  Gas metano bassa pressione
-  Rete acquedotto
-  Rete fognaria
-  Rete illuminazione
-  Cavo telefonico a fibre ottiche

N.B. dati tratti da PUGSS ed archivi comunali



COMUNE DI LEFFE (BG)

PEC - Piano di Emergenza Comunale



CARTA DELLE LIFELINES

Dot. Geol. Enrico Mosconi
Via Reich, 16 - 24020 Torre Boldone (BG)
Cellulare: 347.1328195
Mail: enricomosconi@yahoo.it



maggio 2018

Scala 1:4.000

Tavola 2/C