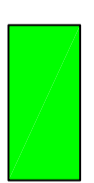

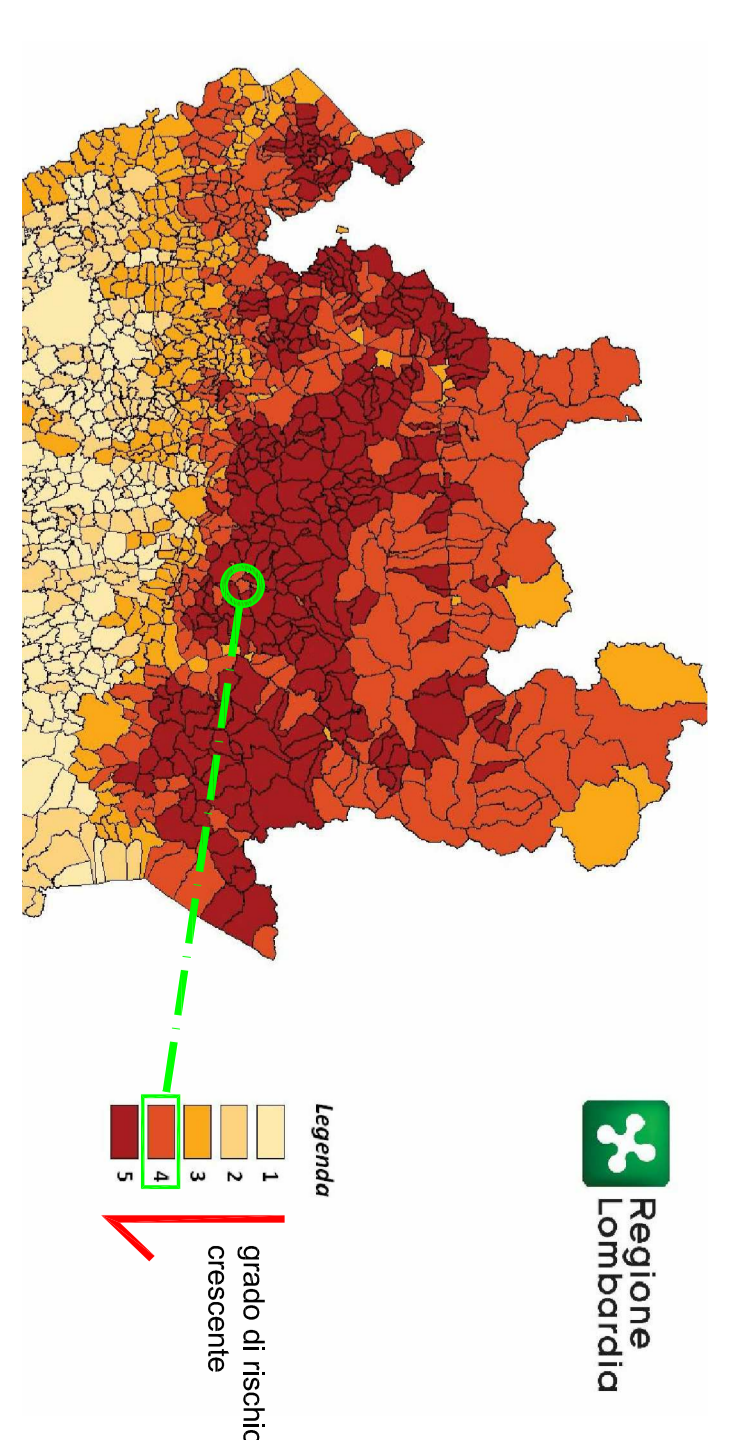
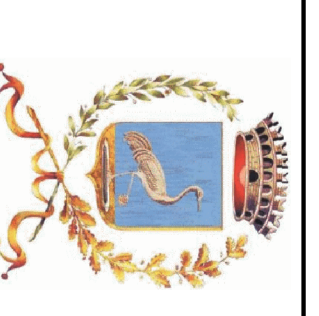
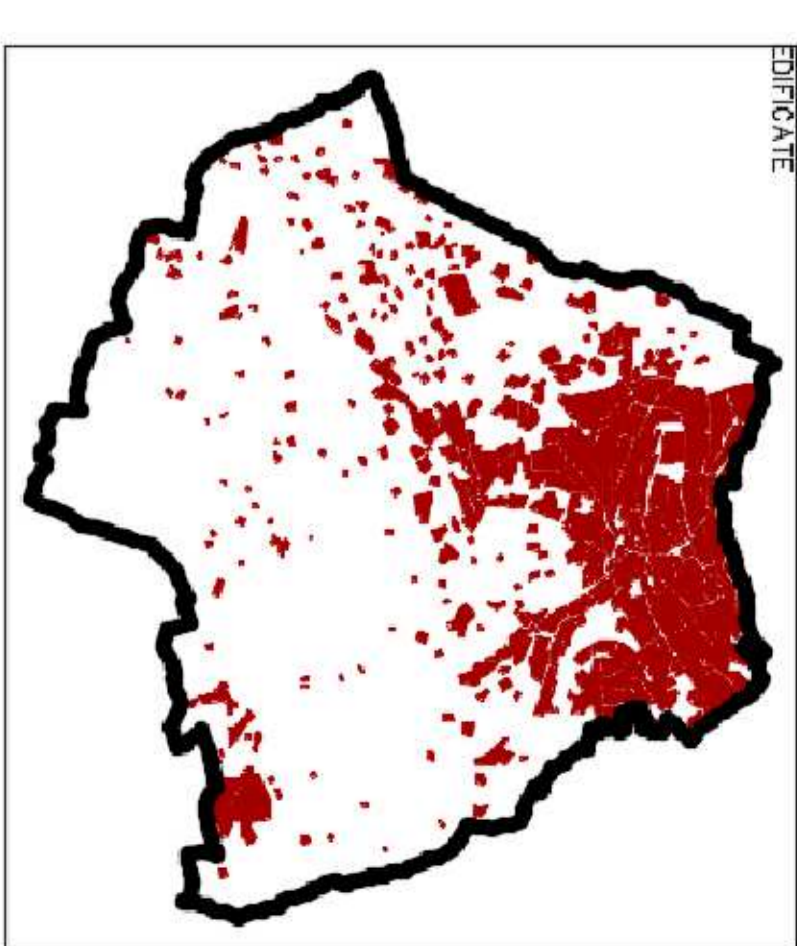
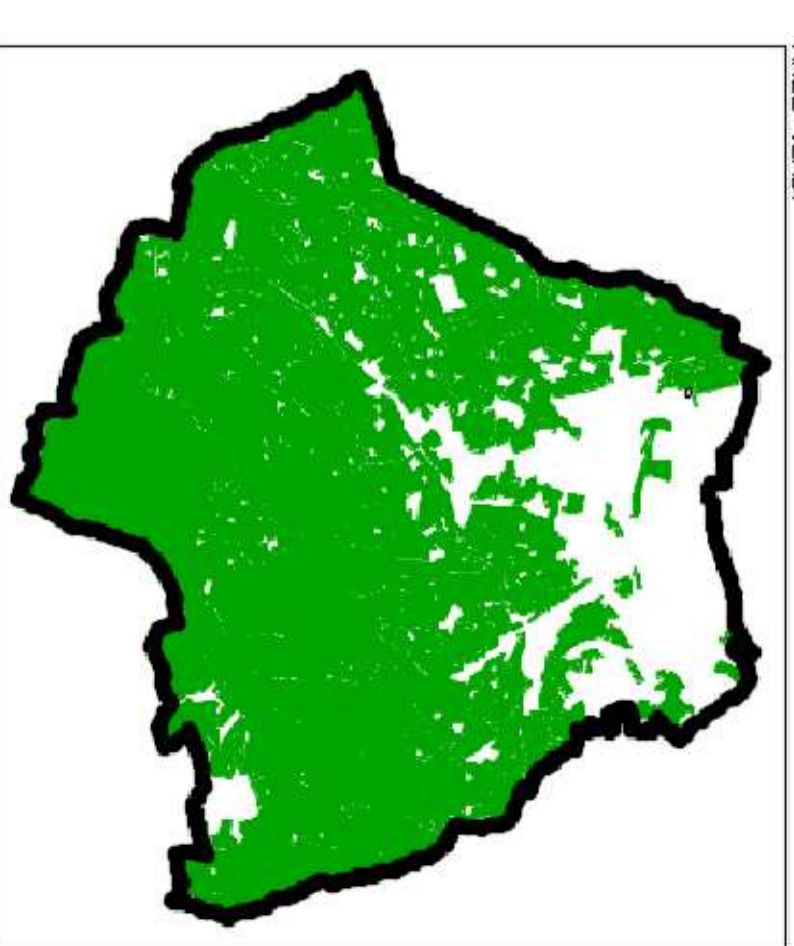


**LEGENDA**

- 
 Elementi di pericolosità per gli incendi boschivi  
 Coperture arboree - arbustive  
 (perimetri derivati dal PGT comunale, DDP, usi suoto)
- 
 Elementi a rischio  
 Strutture antipatiche prossime alle aree boscate  
 potenzialmente vulnerabili in caso di incendio

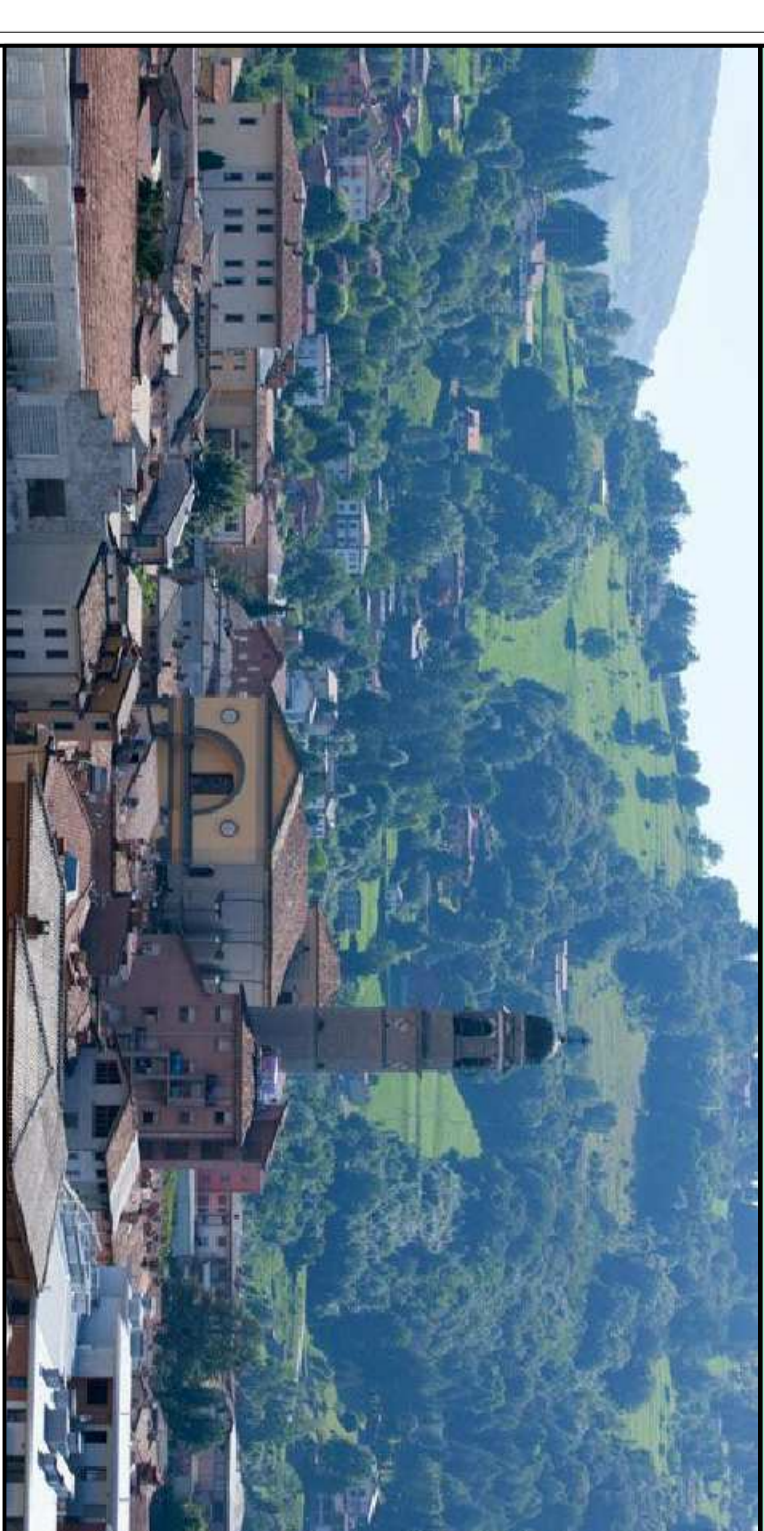


mappa del rischio potenziale di incendi boschivi



**COMUNE DI LEFFE (BG)**

**PEC - Piano di Emergenza Comunale**



**CARTA DELLA PERICOLOSITA' PER INCENDI BOSCHIVI**

Dott. Geol. Enrico Mosconi  
 Via Reich, 16 - 24020 Torre Boldone (BG)  
 Cellulare: 347.1328195  
 Mail: enricomosconi@yahoo.it

Scala 1:4.000  
 maggio 2018  
 Tavola 1/b